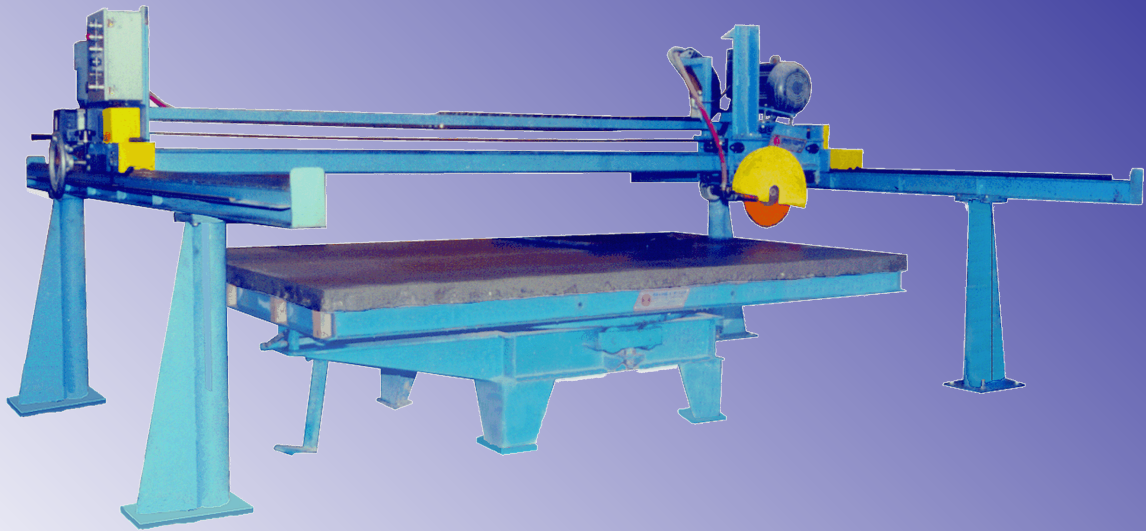




SAWING SYSTEMS INC.

2918 Cherry Arcade Street, Knoxville, TN 37917-6150
(865) 525-0600 • Telefax (865) 525-2320



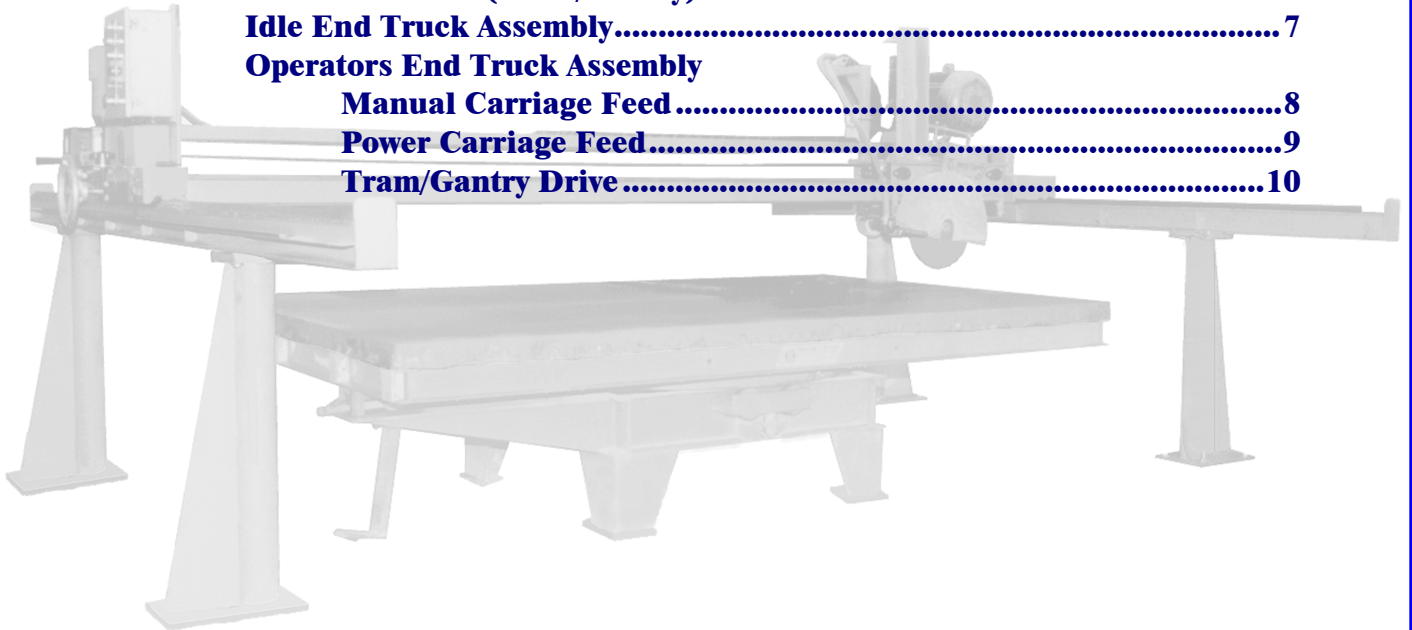
Service Parts Guide Model 515C Diamond Cantry Saw.

Page intentionally left blank.



Table of Contents

Carriage Assembly	1
Spindle Arbor Assemblies	
Spindle Base Assembly	2
Spindle Shaft Assembly	3
Hand Raise and Lower Assembly	4
Power Raise and Lower Assembly	5
Main Motor Assembly.....	6
End Truck Assemblies (Tram/Gantry)	
Idle End Truck Assembly.....	7
Operators End Truck Assembly	
Manual Carriage Feed	8
Power Carriage Feed.....	9
Tram/Gantry Drive	10



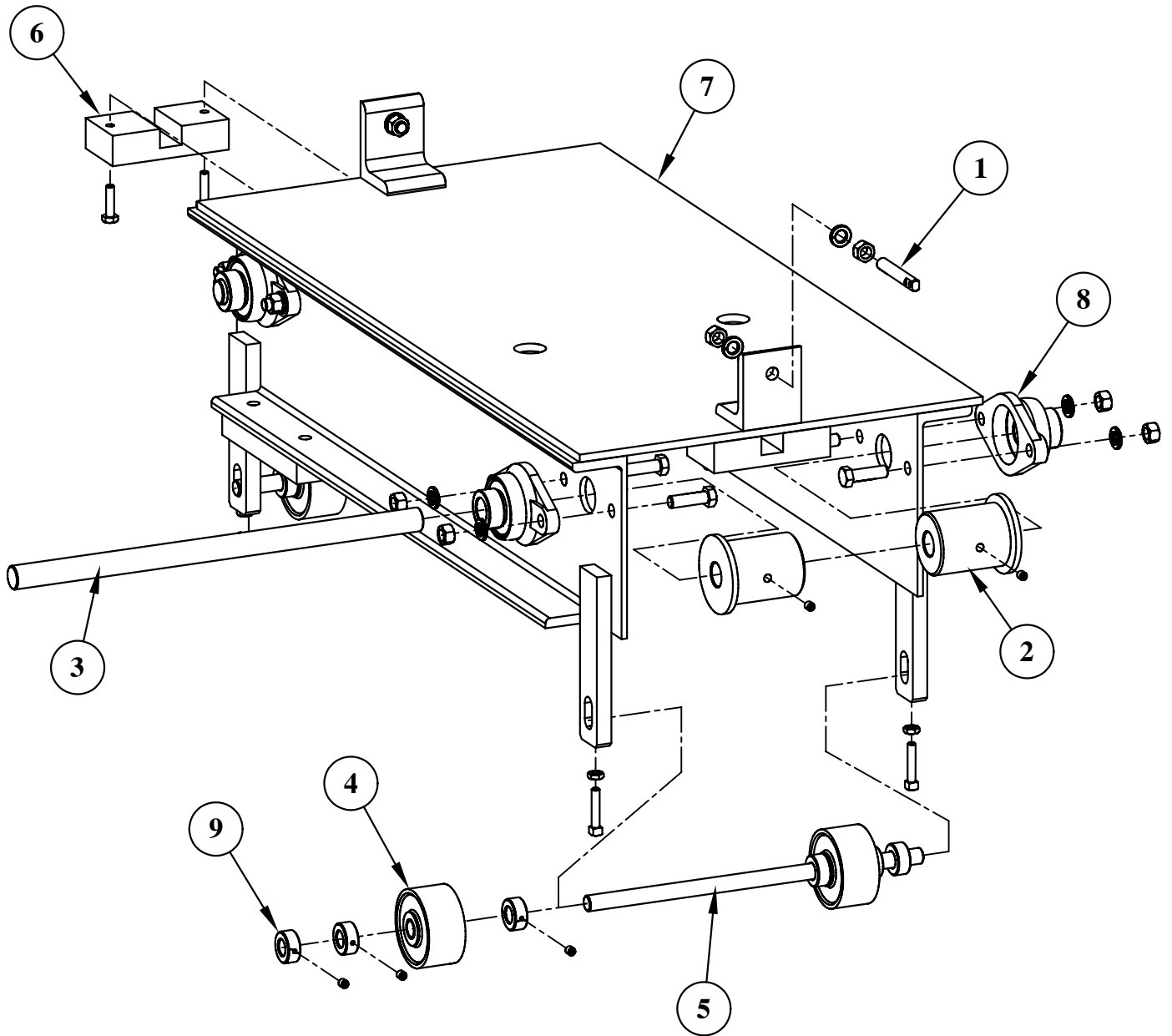
Page intentionally left blank.



SAWING SYSTEMS INC.

P.O. Box 3754 Knoxville TN 37927-3754 (865) 525-0600

(800) 489-0601 Telefax (865) 525-2320



Model 515 Carriage Assembly

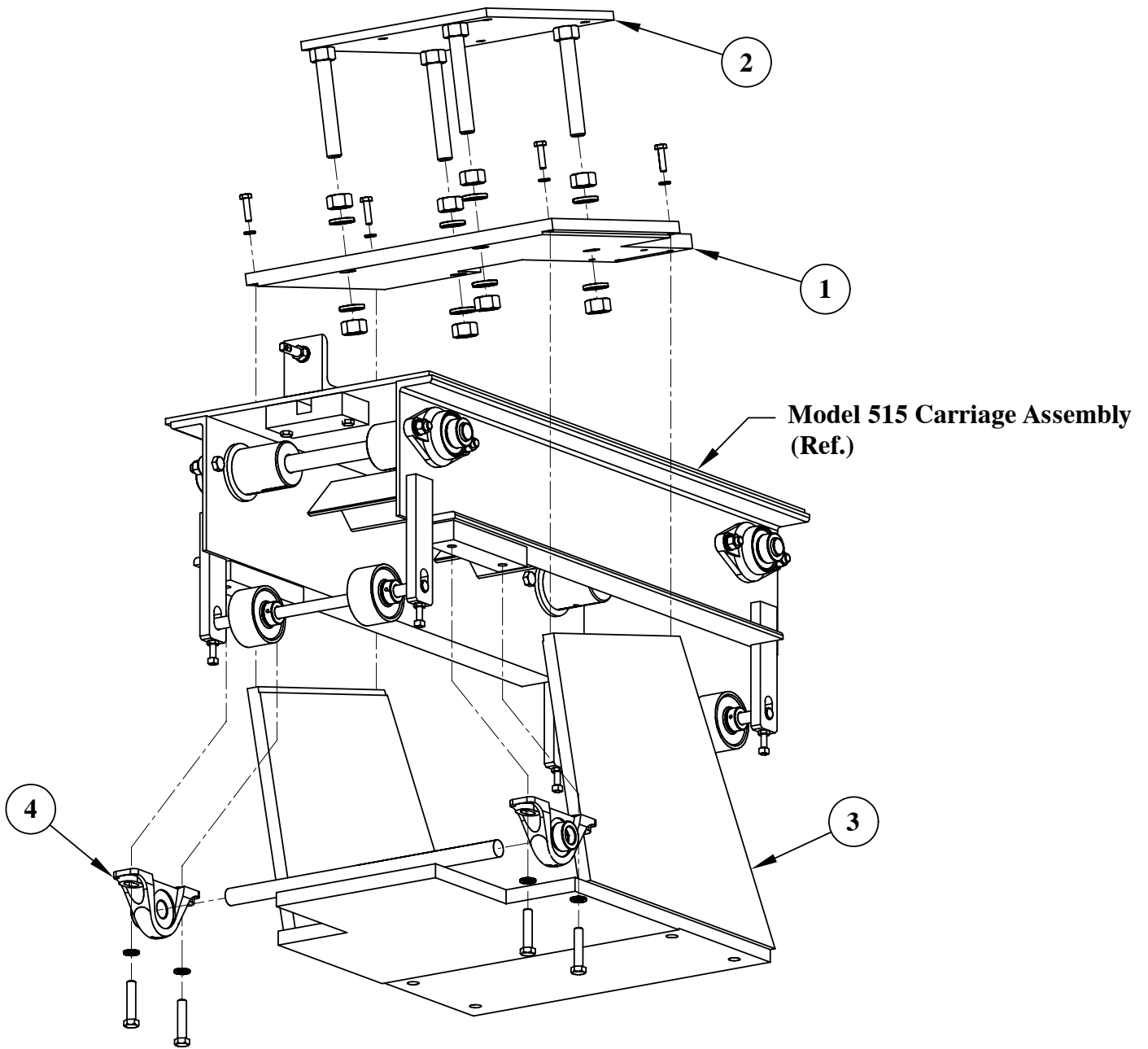
Item	Qty.	Part Description	Part Number
1	2	Chain Adjuster Shaft	A-4476-1
2	4	Top Roller	A-4476-2
3	2	Roller Shaft	A-4476-3
4	4	Guide Roller	A-4476-4
5	2	Shaft - Guide Rollers	A-4476-5
6	2	Chain Guide	A-4476-13
7	1	Saddle	E-4068-9
8	4	VCJT 3/4" Fafnir 2-Bolt Flange Bearing	MB-5000-002
9	12	C-050 Shaft Collar	SA-5000-079



SAWING SYSTEMS INC.

P.O. Box 3754 Knoxville TN 37927-3754 (865) 525-0600

(800) 489-0601 Telefax (865) 525-2320



Model 515 Spindle Base Assembly

Item	Qty.	Part Description	Part Number
1	1	Saddle Top Plate	B-4460-5
2	1	Motor Deck	B-4460-8
3	1	Spindle Base	E-4068-10
4	2	VAK 3/4" Fafnir Pillow Block	MB-5000-003

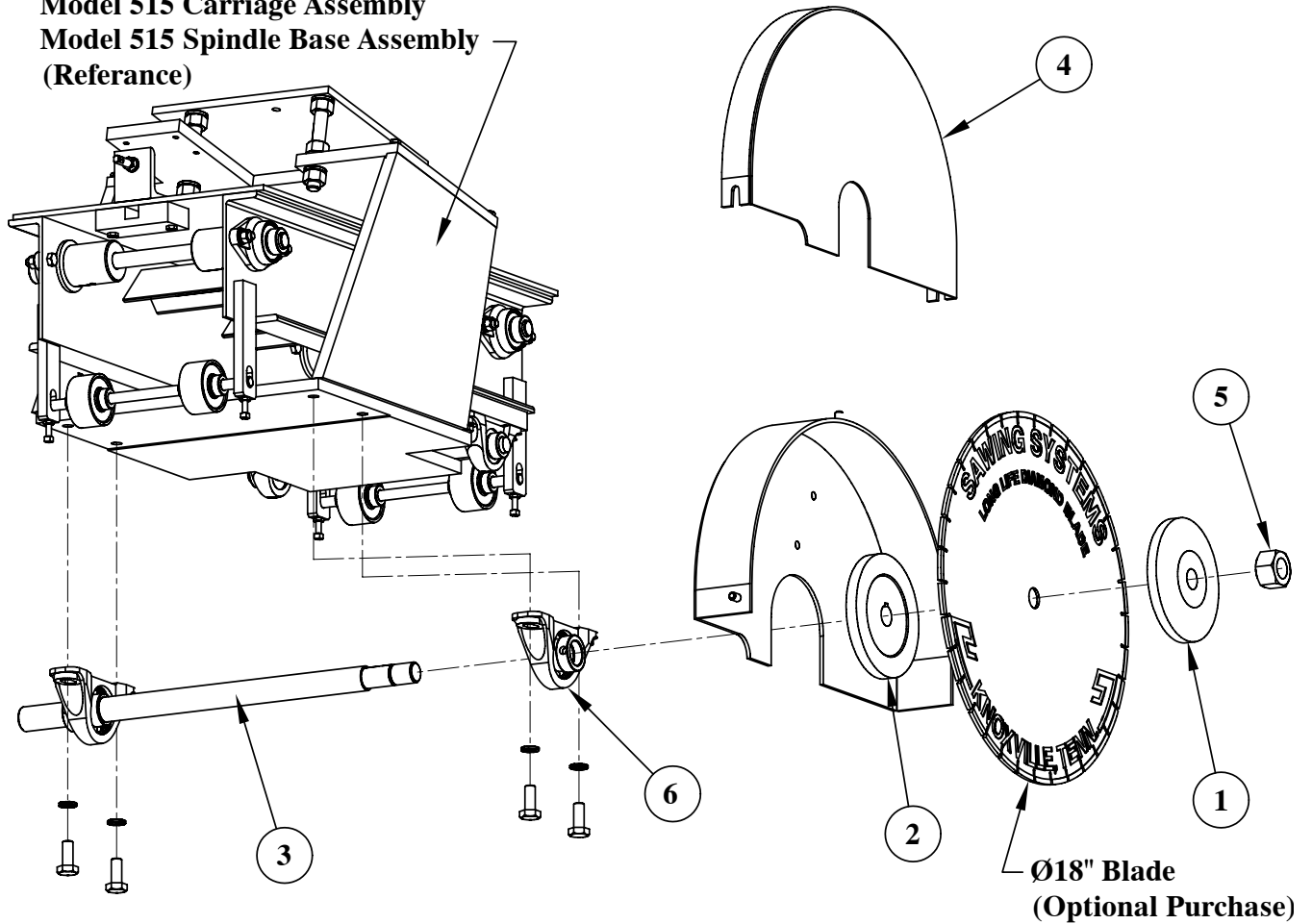


SAWING SYSTEMS INC.

P.O. Box 3754 Knoxville TN 37927-3754 (865) 525-0600

(800) 489-0601 Telefax (865) 525-2320

**Model 515 Carriage Assembly
Model 515 Spindle Base Assembly
(Reference)**



Model 515 Spindle Shaft Assembly

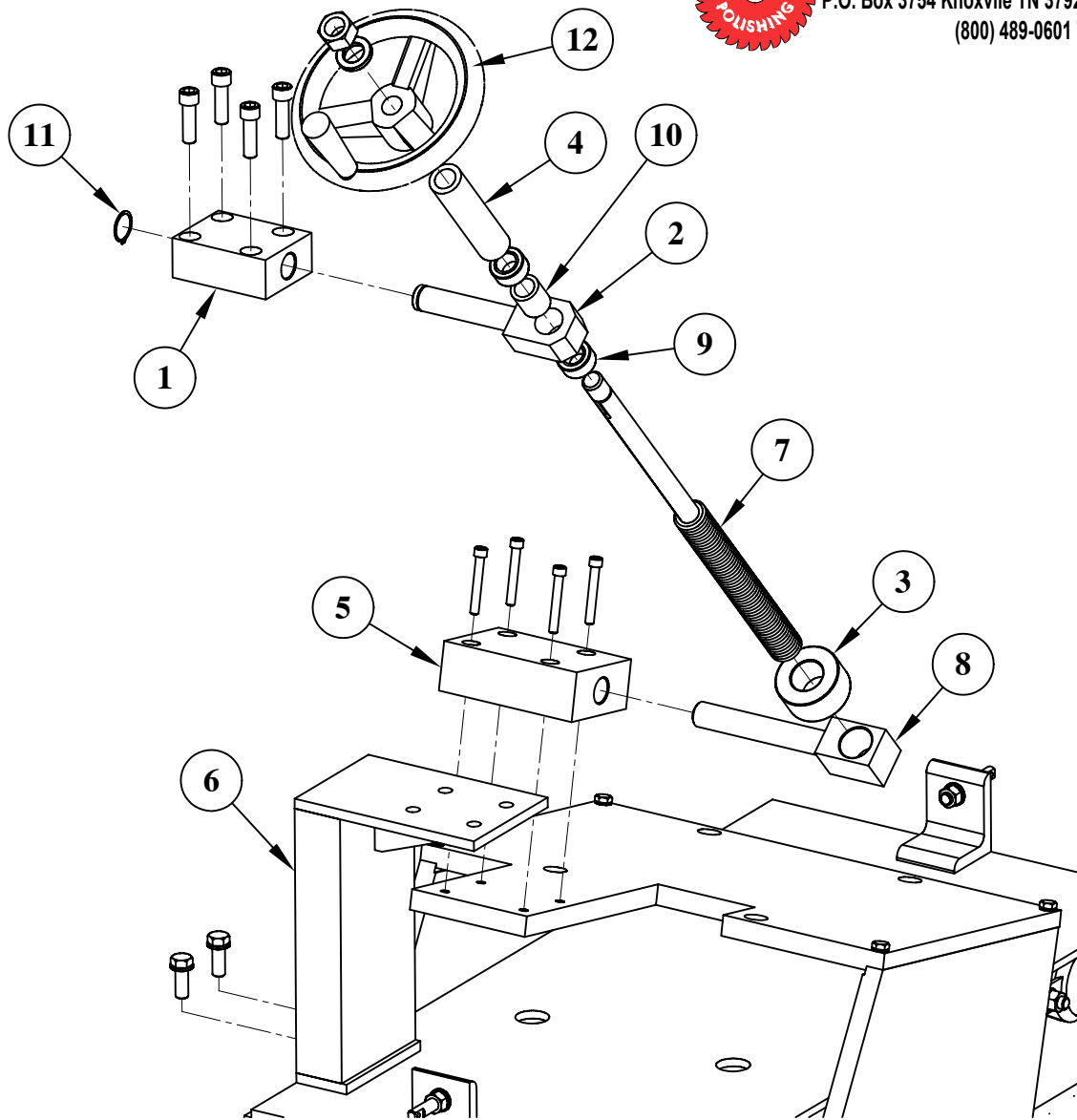
Item	Qty.	Part Description	Part Number
1	1	Spindle Removable Collar	A-4149-1
2	1	Spindle Permanent Collar	A-4150-2
3	1	Spindle Shaft	B-4460-4
4	1	Blade Guard	B-4055-3
5	1	1" Brass Spindle Nut - 1-8 Thd.	NB-5000-192
6	2	RAK 1-3/16" Pillow Block	MB-5000-083



SAWING SYSTEMS INC.

P.O. Box 3754 Knoxville TN 37927-3754 (865) 525-0600

(800) 489-0601 Telefax (865) 525-2320



Model 515 Hand Raise and Lower Assembly

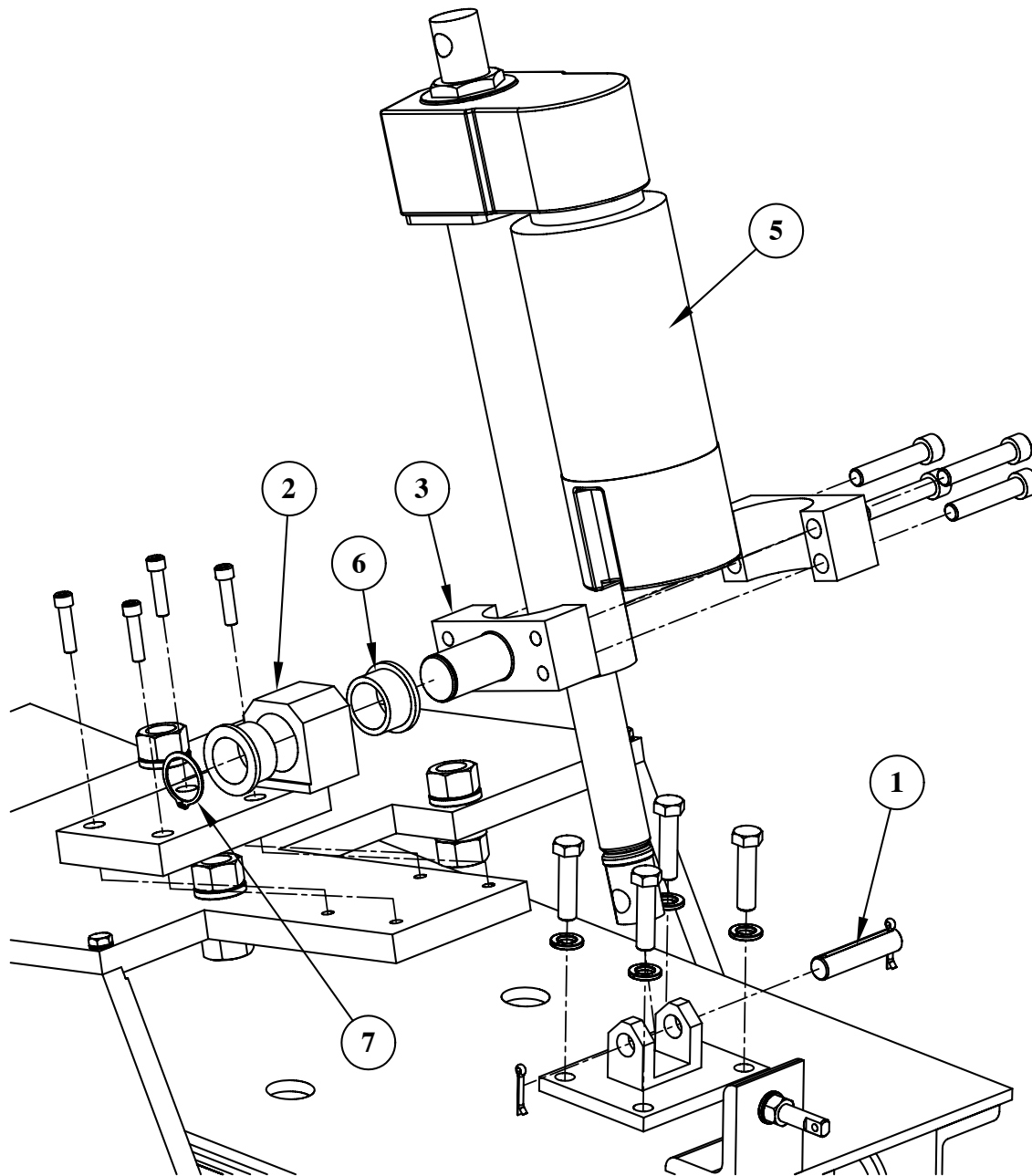
Item	Qty.	Part Description	Part Number
1	1	Pillow Block	A-4476-9
2	1	Yoke	A-4476-10
3	1	Clamping Nut	A-4476-11
4	1	Spacer	A-4476-12
5	1	Raise & Lower Clamp Block	B-4173-1
6	1	Bracket	B-4460-3
7	1	Raise & Lower Screw	B-4460-6
8	1	Raise & Lower Nut	B-4460-7
9	2	D-3 Thrust Bearing--Ina	A-3900-052
10	1	SS-2028-16 Symmco Brass Bushing	BU-5000-133
11	1	5100-75 Retaining Ring	SA-5000-006
12	1	6" Hand Wheel	SA-5000-061



SAWING SYSTEMS INC.

P.O. Box 3754 Knoxville TN 37927-3754 (865) 525-0600

(800) 489-0601 Telefax (865) 525-2320



Model 515 Power Raise and Lower Assembly

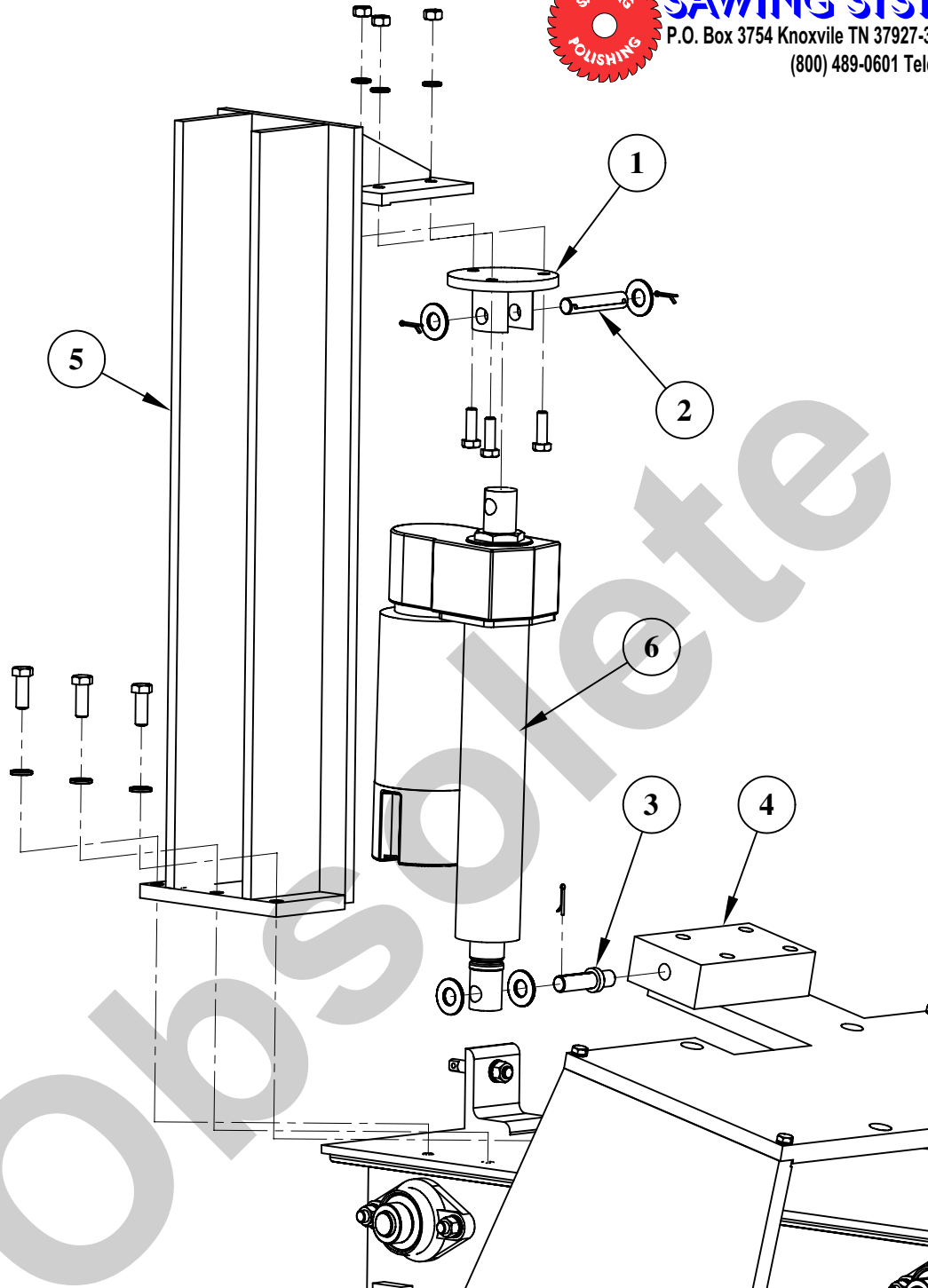
Item	Qty.	Part Description	Part Number
1	1	Actuator Mounting Pin	A-4476-23A
2	1	Saddle Mounting Block	B-4173-1B
3	1	Actuator Trunion Mount	B-4173-1C
4	1	Actuator Mounting Flange	B-4173-1D
5	1	A12-20B5-04D Elec. Actuator	ED-5000-031
6	2	EF162012 Flanged Plane Bearing	BU-5000-175
7	1	5100-100 Tru-Arc Retaining Ring	SA-5000-241



SAWING SYSTEMS INC.

P.O. Box 3754 Knoxville TN 37927-3754 (865) 525-0600

(800) 489-0601 Telefax (865) 525-2320



Model 515 Power Raise and Lower Assembly

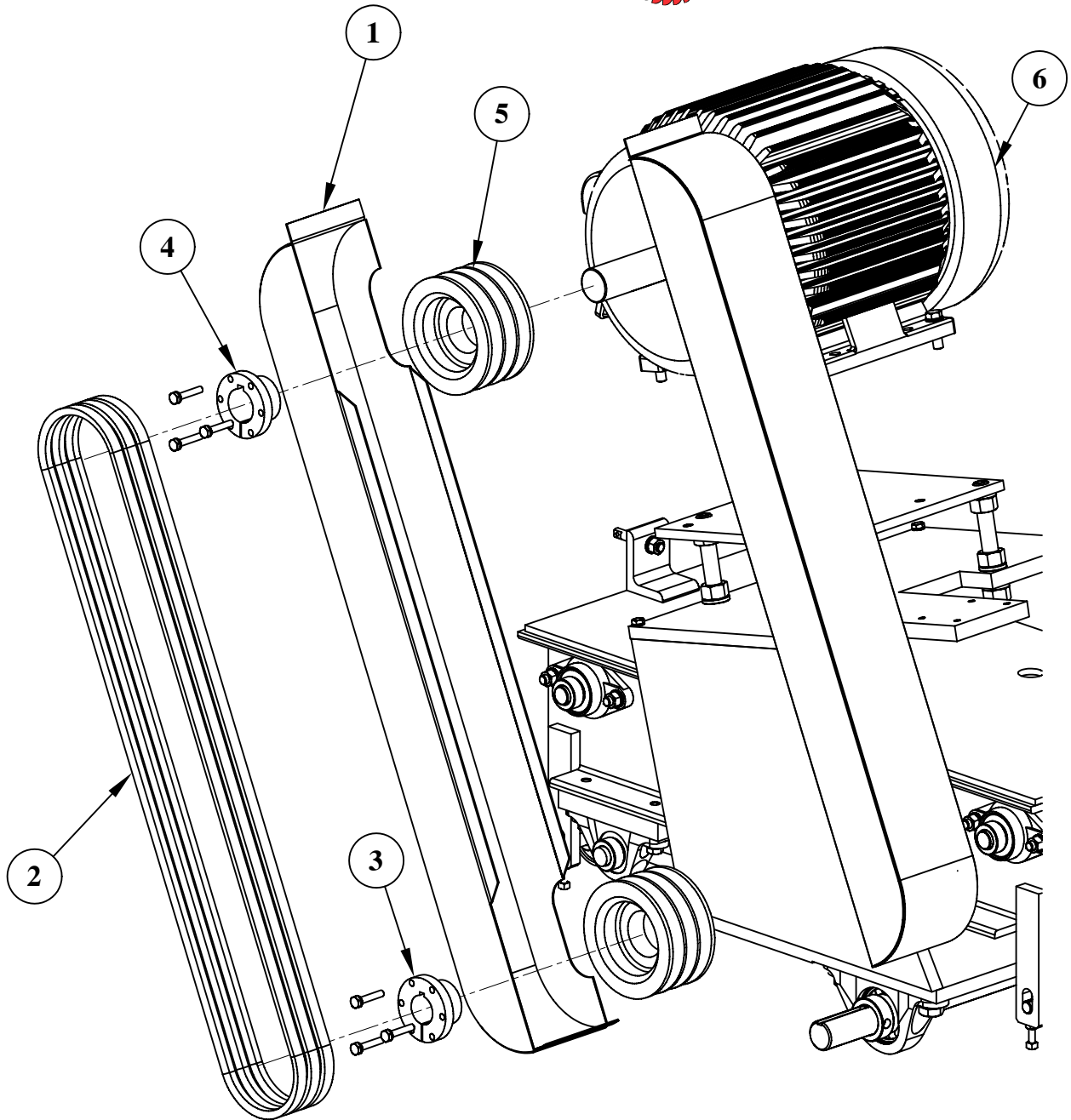
Item	Qty.	Part Description	Part Number
1	1	Actuator Mounting Flange	A-4367-9A
2	1	Actuator Mounting Pin	A-4367-11
3	1	Threaded Pin	A-4476-23
4	1	Saddle Mounting Block	B-4173-1A
5	1	Actuator Support Bracket	B-4460-16
6	1	A12-20B5-04D Elec. Actuator	ED-5000-031



SAWING SYSTEMS INC.

P.O. Box 3754 Knoxville TN 37927-3754 (865) 525-0600

(800) 489-0601 Telefax (865) 525-2320

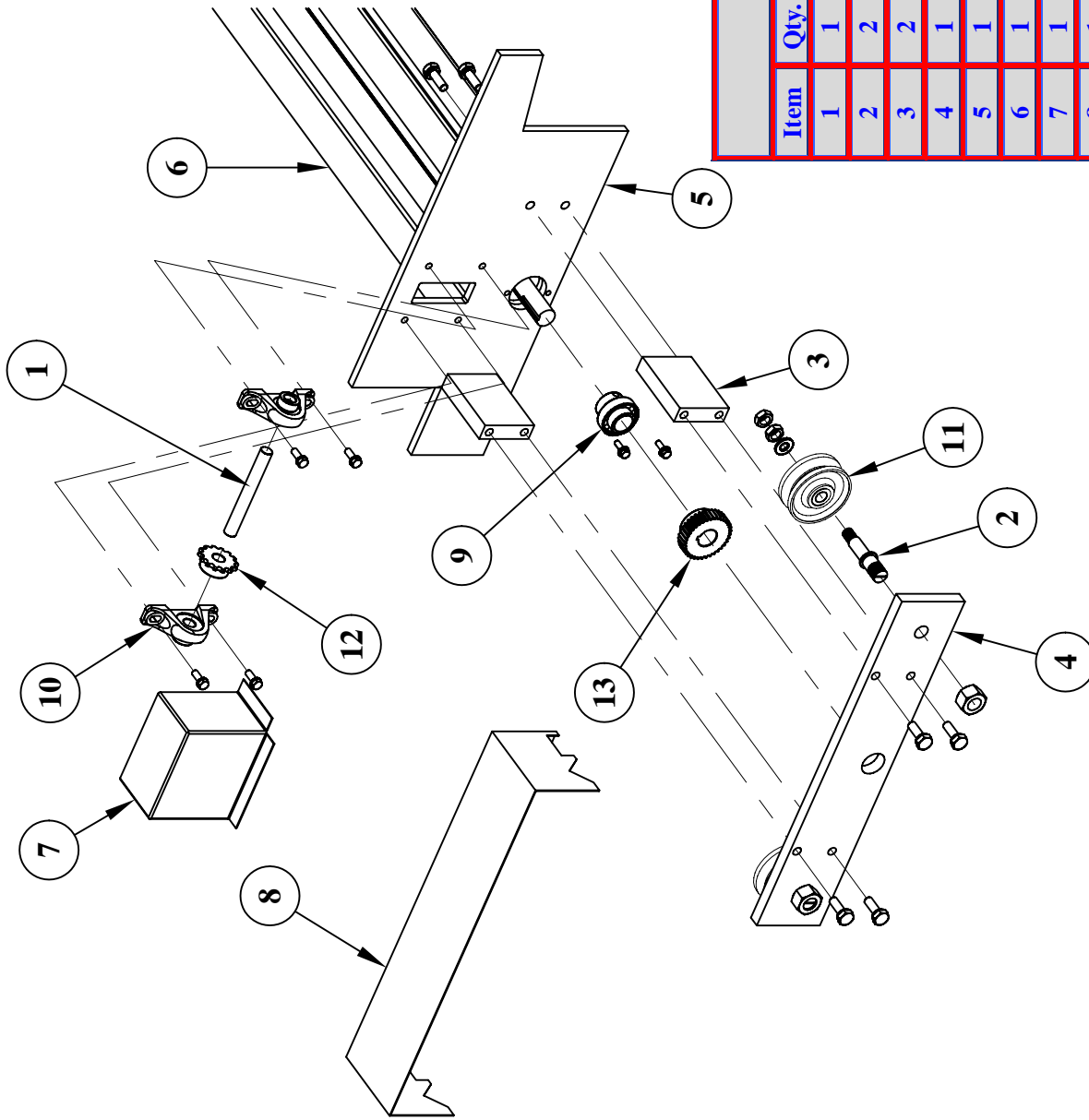


Model 515 Main Motor Assembly

Item	Qty.	Part Description	Part Number
1	1	Belt Guard	Purchase
2	3	Belt A62	VD-5000-009
3	1	SH X 1-3/16" QD Bushing	BU-5000-004
4	1	SH X 1-3/8" QD Bushing	BU-5000-005
5	2	3A4.0B4.4-SH QD Sheave	VD-5000-008
6	1	Motor 7HP-1800-TEFC-215T (Standard)	EM-5000-159
		Motor 10HP-1800-TEFC-215T (Option)	EM-5000-048



SAWING SYSTEMS INC.
 P.O. Box 3754 Knoxville TN 37927-3754 (865) 525-0600
 (800) 489-0601 Telefax (865) 525-2320

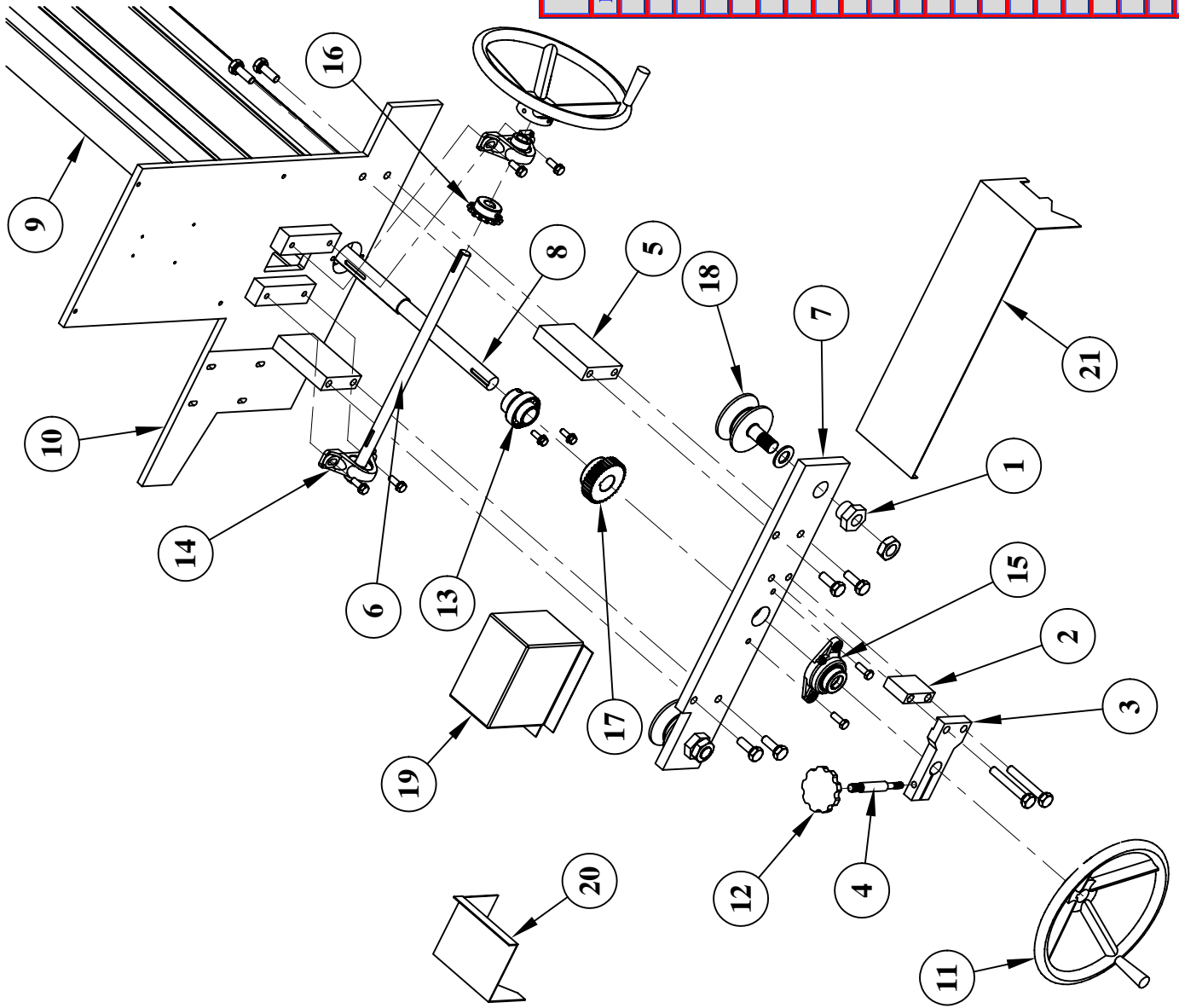


Model 515C Idle End Truck Assembly

Item	Qty.	Part Description	Part Number
1	1	Shaft - Idler Sprocket - Chain Feed.	A-4476-8
2	2	Eccentric Shaft - Tram Idle Rollers.	A-4476-17
3	2	Gusset - Tram Roller Plates.	A-4476-22
4	1	Back Mounting Plate Tram Roller.	B-4460-12
5	1	Idle Rail End Plate.	B-4460-17B
6	1	Saw Rail Weldment.	E-4068-8A2
7	1	Bearing Cover - Chain Drive.	Purchase
8	1	Cover Plate - #3 - Idle Rail End.	Purchase
9	1	Fafnir 1103KRR Bearings - Tram Shaft.	A-3900-153
10	2	Fafnir VAK 3-4in Pillow Block.	MB-5000-003
11	2	Hamilton W-4V-3-4-BS Wheel.	WC-5000-001
12	1	Martin 41B14T Sprocket.	CD-5000-003
13	1	Martin S1236 Spur Gear.	GR-5000-009



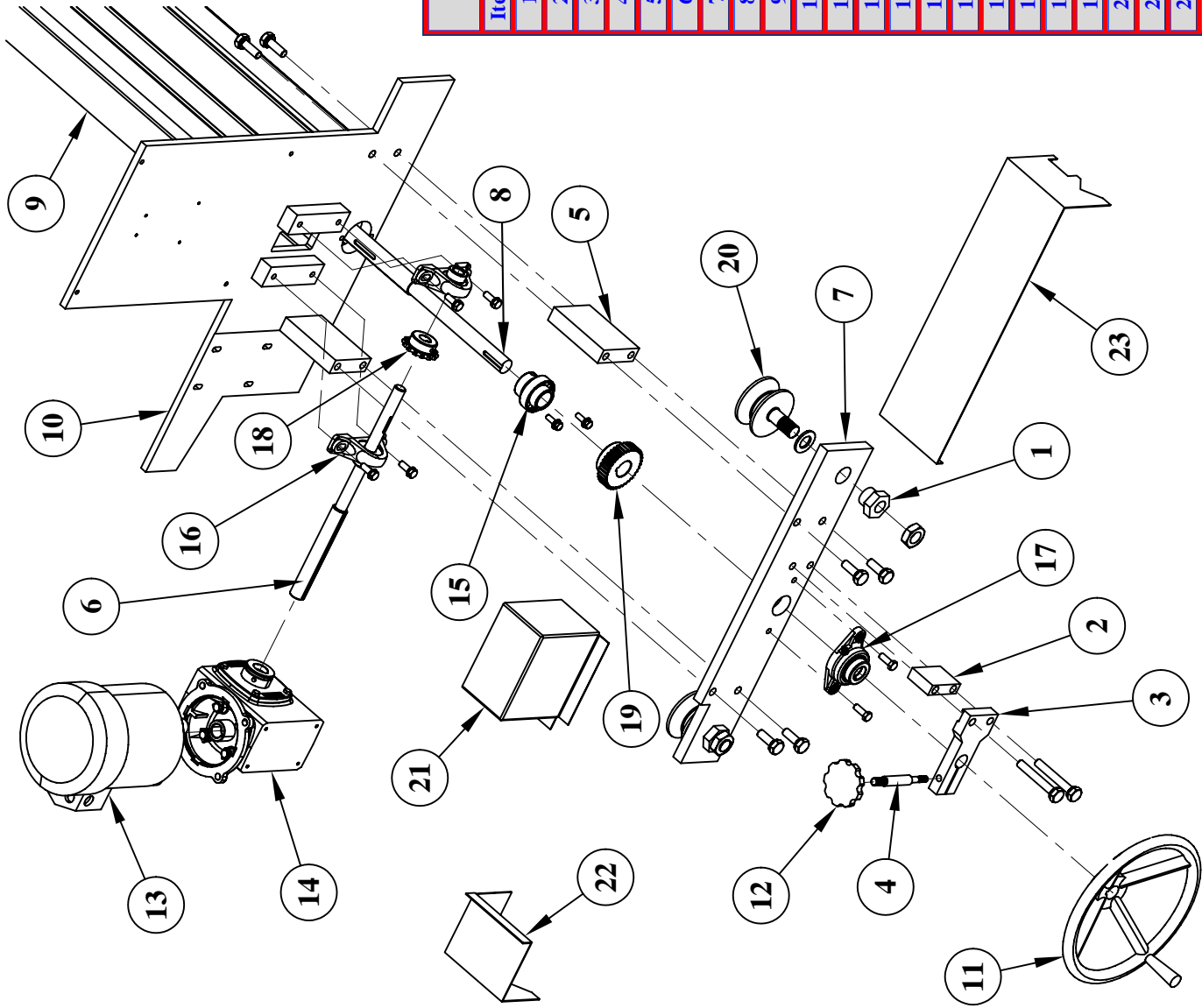
SAWING SYSTEMS INC.
 P.O. Box 3754 Knoxville TN 37927-3754 (865) 525-0600
 (800) 489-0601 Telefax (865) 525-2320



Model 515C Operators End Truck Assembly Manual Carriage Feed			
Item	Qty.	Part Description	Part Number
1	2	Eccentric Nut - Tram Roller.	A-4476-16
2	1	Mounting Base - Brake Clamp	A-4476-18
3	1	Tram Brake Clamp.	A-4476-19
4	1	Shaft - Tram Brake Handle.	A-4476-20
5	2	Gusset - Tram Roller Plates.	A-4476-22
6	1	Shaft - Manual Feed.	B-4460-2A
7	1	Front Mfg. Plate Tram Rollers.	B-4460-13A
8	1	Tram Shaft.	B-4460-15
9	1	Saw Rail Weldment.	E-4068-8A2
10	1	Main Rail End Plate - Power Feed.	E-4068-12B
11	1	10-Inch Aluminum Hand Wheel.	SA-5000-152
12	1	3-Inch Hand Wheel.	SA-5000-242
13	1	Fafnir 1103KRR Bearings - Tram Shaft.	A-3900-153
14	2	Fafnir VAK 3/4" Pillow Block.	MB-5000-003
15	1	Fafnir VCJT 1" Bearing.	MB-5000-020
16	1	Martin 41B14T Sprocket.	CD-5000-003
17	1	Martin S1236 Spur Gear.	GR-5000-009
18	2	Osborn VLR 3 1/2" Idler.	WC-5000-010
19	1	Bearing Cover - Chain Drive.	Purchase
20	1	Cover Plate - #1 - Main Rail End.	Purchase
21	1	Cover Plate - #2 - Main Rail End.	Purchase



SAWING SYSTEMS INC.
 P.O. Box 3754 Knoxville TN 37927-3754 (865) 525-0600
 (800) 489-0601 Telefax (865) 525-2320

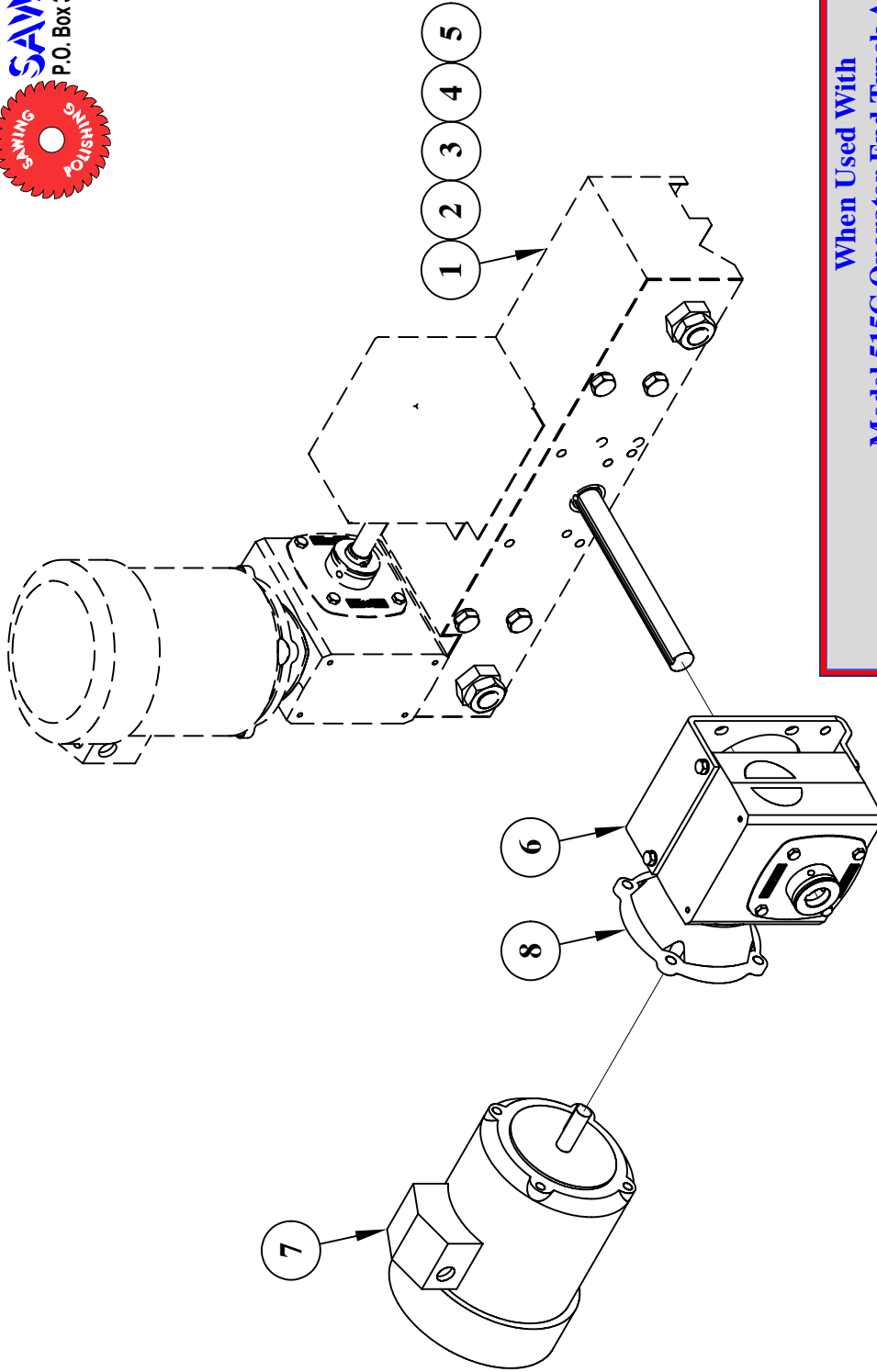


**Model 515C Operators End Truck Assembly
 Power Carriage Feed**

Item	Qty.	Part Description	Part Number
1	2	Eccentric Nut - Tram Roller.	A-4476-16
2	1	Mounting Base - Brake Clamp	A-4476-18
3	1	Tram Brake Clamp.	A-4476-19
4	1	Shaft - Tram Brake Handle.	A-4476-20
5	2	Gusset - Tram Roller Plates.	A-4476-22
6	1	Shaft - Power Feed.	B-4460-2B
7	1	Front Mtg. Plate Tram Rollers.	B-4460-13A
8	1	Tram Shaft.	B-4460-15
9	1	Saw Rail Weldment.	E-4068-8A2
10	1	Main Rail End Plate - Power Feed.	E-4068-12B
11	1	10-Inch Aluminum Hand Wheel.	SA-5000-152
12	1	3-Inch Hand Wheel.	SA-5000-242
13	1	Baldor VM3538 AC Electric Motor.	EM-5000-059
14	1	Boston Gear HF721-60-PS-B5-H-P16 Reducer.	SR-5000-180
15	1	Fafnir 1103KRR Bearings - Tram Shaft.	A-3900-153
16	2	Fafnir VAK 3/4" Pillow Block.	MB-5000-003
17	1	Fafnir VCJT 1" Bearing.	MB-5000-020
18	1	Martin 41B14T Sprocket.	CD-5000-003
19	1	Martin S1236 Spur Gear.	GR-5000-009
20	2	Osborn VLR 3 1/2" Idler.	WC-5000-010
21	1	Bearing Cover - Chain Drive.	Purchase
22	1	Cover Plate - #1 - Main Rail End.	Purchase
23	1	Cover Plate - #2 - Main Rail End.	Purchase



SAWING SYSTEMS INC.
 P.O. Box 3754 Knoxville TN 37927-3754 (865) 525-0600
 (800) 489-0601 Telefax (865) 525-2320



**When Used With
 Model 515C Operator End Truck Assemblies.**

Item	Qty.	Part Description	Part Number
1	-1	Mounting Base – Brake Clamp	A-4476-18
2	-1	Tram Brake Clamp.	A-4476-19
3	-1	Shaft - Tram Brake Handle.	A-4476-20
4	-1	VCJT 1" 2-Bolt Flange	MB-5000-020
5	-1	10" Jergens Alum Handwheel (82401100)	SA-5000-152
6	1	Boston Gear – Bracket Modification	B-4460-13B
7	1	VM3538 1/2HP-1800-TEFC-56C	EM-5000-059
8	1	HF721L/R-60PS-B5-H-P16-T1 (83100)	SR-5000-173